



ELECTRONIC COPY

LABORATORY GROWN DIAMOND REPORT

April 7, 2026  
IGI Report Number LG780666188  
Description LABORATORY GROWN DIAMOND  
Shape and Cutting Style CUT CORNERED RECTANGULAR MODIFIED BRILLIANT  
Measurements 9.44 X 6.65 X 4.59 MM

GRADING RESULTS

Carat Weight 2.51 CARATS  
Color Grade D  
Clarity Grade FLAWLESS

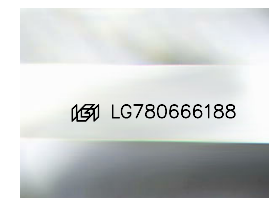
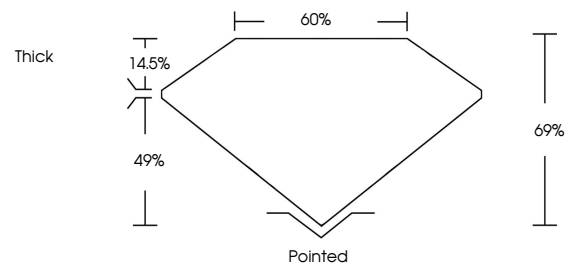
ADDITIONAL GRADING INFORMATION

Polish EXCELLENT  
Symmetry EXCELLENT  
Fluorescence NONE

Inscription(s) LG780666188

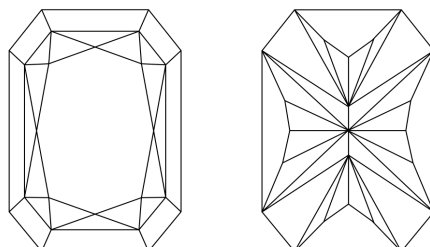
Comments: This Laboratory Grown Diamond was created by Chemical Vapor Deposition (CVD) growth process.  
Type IIa

PROPORTIONS



Sample Image Used

CLARITY CHARACTERISTICS



KEY TO SYMBOLS

Red symbols indicate internal characteristics.  
Green symbols indicate external characteristics.

COLOR

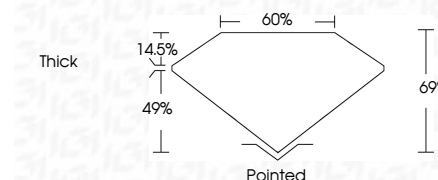
D E F G H I J Faint Very Light Light

CLARITY

FL IF VS<sup>1-2</sup> VS<sup>1-2</sup> SI<sup>1-2</sup> I<sup>1-3</sup>  
Flawless Internally Flawless Very Very Slightly Included Very Slightly Included Slightly Included Included



April 7, 2026  
IGI Report Number LG780666188  
Description LABORATORY GROWN DIAMOND  
Shape and Cutting Style CUT CORNERED RECTANGULAR MODIFIED BRILLIANT  
Measurements 9.44 X 6.65 X 4.59 MM  
GRADING RESULTS  
Carat Weight 2.51 CARATS  
Color Grade D  
Clarity Grade FLAWLESS



ADDITIONAL GRADING INFORMATION

Polish EXCELLENT  
Symmetry EXCELLENT  
Fluorescence NONE  
Inscription(s) LG780666188  
Comments: This Laboratory Grown Diamond was created by Chemical Vapor Deposition (CVD) growth process.  
Type IIa



April 7, 2026  
IGI Report No LG780666188  
CUT CORNERED RECT. MODIFIED BRILLIANT  
9.44 X 6.65 X 4.59 MM  
Carat Weight 2.51 CARATS  
Color Grade D  
Clarity Grade FLAWLESS  
Depth 69%  
Table 60%  
Girdle Thick  
Culet Pointed  
Polish EXCELLENT  
Symmetry EXCELLENT  
Fluorescence NONE  
Inscription(s) LG780666188  
Comments: This Laboratory Grown Diamond was created by Chemical Vapor Deposition (CVD) growth process.  
Type IIa