



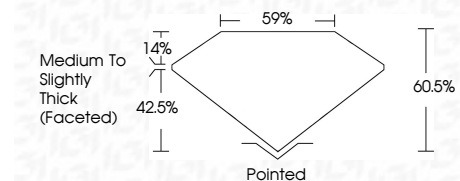
ELECTRONIC COPY

LG780661869 Report verification at igi.org



March 26, 2026 IGI Report Number LG780661869 Description LABORATORY GROWN DIAMOND Shape and Cutting Style MARQUISE BRILLIANT Measurements 12.00 X 6.30 X 3.81 MM

GRADING RESULTS Carat Weight 1.68 CARAT Color Grade D Clarity Grade VVS 1



ADDITIONAL GRADING INFORMATION Polish EXCELLENT Symmetry EXCELLENT Fluorescence NONE Inscription(s) LG780661869 Comments: As Grown - No indication of post-growth treatment. This Laboratory Grown Diamond was created by High Pressure High Temperature (HPHT) growth process. Type II



March 26, 2026 IGI Report No LG780661869 MARQUISE BRILLIANT 12.00 X 6.30 X 3.81 MM 1.68 CARAT D VVS 1 60.5% 59% Medium to Slightly Thick (Faceted) Pointed EXCELLENT EXCELLENT NONE LG780661869

Comments: As Grown - No indication of post-growth treatment. This Laboratory Grown Diamond was created by High Pressure High Temperature (HPHT) growth process. Type II

LABORATORY GROWN DIAMOND REPORT

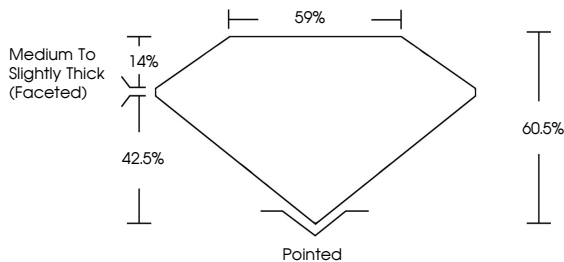
March 26, 2026 IGI Report Number LG780661869 Description LABORATORY GROWN DIAMOND Shape and Cutting Style MARQUISE BRILLIANT Measurements 12.00 X 6.30 X 3.81 MM

GRADING RESULTS Carat Weight 1.68 CARAT Color Grade D Clarity Grade VVS 1

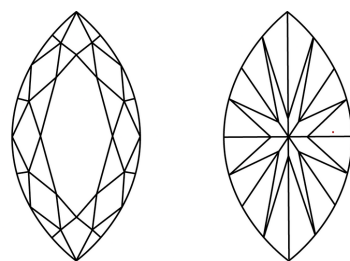
ADDITIONAL GRADING INFORMATION Polish EXCELLENT Symmetry EXCELLENT Fluorescence NONE Inscription(s) LG780661869

Comments: As Grown - No indication of post-growth treatment. This Laboratory Grown Diamond was created by High Pressure High Temperature (HPHT) growth process. Type II

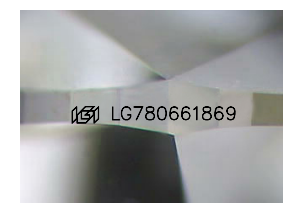
PROPORTIONS



CLARITY CHARACTERISTICS



KEY TO SYMBOLS Red symbols indicate internal characteristics. Green symbols indicate external characteristics.



Sample Image Used

COLOR

Color scale table with categories D, E, F, G, H, I, J, Faint, Very Light, Light.

CLARITY

Clarity scale table with categories FL, IF, VS 1-2, VS 1-2, SI 1-2, I 1-3, Flawless, Internally Flawless, Very Very Slightly Included, Very Slightly Included, Slightly Included, Included.

