



ELECTRONIC COPY

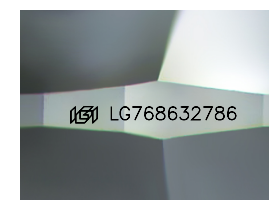
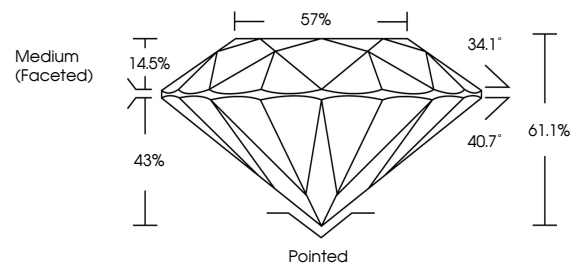
LG768632786
Report verification at igi.org



March 17, 2026
IGI Report Number LG768632786
Description LABORATORY GROWN DIAMOND
Shape and Cutting Style ROUND BRILLIANT
Measurements 7.59 - 7.62 X 4.64 MM

March 17, 2026
IGI Report Number LG768632786
Description LABORATORY GROWN DIAMOND
Shape and Cutting Style ROUND BRILLIANT
Measurements 7.59 - 7.62 X 4.64 MM

PROPORTIONS



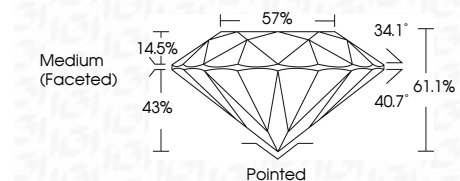
Sample Image Used

GRADING RESULTS
Carat Weight 1.65 CARAT
Color Grade D
Clarity Grade FLAWLESS
Cut Grade IDEAL

GRADING RESULTS

Carat Weight 1.65 CARAT
Color Grade D
Clarity Grade FLAWLESS
Cut Grade IDEAL

CLARITY CHARACTERISTICS



ADDITIONAL GRADING INFORMATION

Polish EXCELLENT
Symmetry EXCELLENT
Fluorescence NONE
Inscription(s) LG768632786

ADDITIONAL GRADING INFORMATION

Polish EXCELLENT
Symmetry EXCELLENT
Fluorescence NONE
Inscription(s) LG768632786
Comments: HEARTS & ARROWS
As Grown - No indication of post-growth treatment.
This Laboratory Grown Diamond was created by High Pressure High Temperature (HPHT) growth process.
Type II

KEY TO SYMBOLS

Red symbols indicate internal characteristics.
Green symbols indicate external characteristics.



COLOR

D E F G H I J Faint Very Light Light

CLARITY

FL IF VS 1-2 VS 1-2 SI 1-2 I 1-3
Flawless Internally Flawless Very Very Slightly Included Very Slightly Included Slightly Included Included



IGI

March 17, 2026
IGI Report No LG768632786
ROUND BRILLIANT
7.59 - 7.62 X 4.64 MM
1.65 CARAT
D
FLAWLESS
IDEAL
61.1%
57%
Medium (Faceted)
Pointed
EXCELLENT
EXCELLENT
NONE
None
IGI LG768632786
Comments: HEARTS & ARROWS
As Grown - No indication of post-growth treatment.
This Laboratory Grown Diamond was created by High Pressure High Temperature (HPHT) growth process.
Type II