



ELECTRONIC COPY

LG754593773
Report verification at igi.org



February 2, 2026
IGI Report Number **LG754593773**
Description **LABORATORY GROWN DIAMOND**
Shape and Cutting Style **PRINCESS CUT**
Measurements **6.65 X 6.50 X 4.48 MM**
GRADING RESULTS
Carat Weight **1.71 CARAT**
Color Grade **D**
Clarity Grade **INTERNALLY FLAWLESS**

February 2, 2026
IGI Report Number **LG754593773**
Description **LABORATORY GROWN DIAMOND**
Shape and Cutting Style **PRINCESS CUT**
Measurements **6.65 X 6.50 X 4.48 MM**

GRADING RESULTS

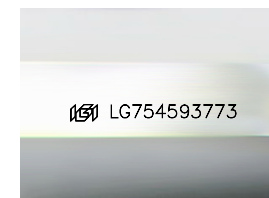
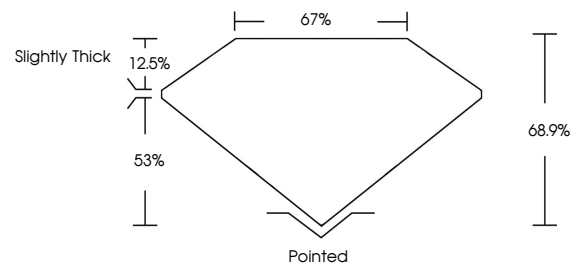
Carat Weight **1.71 CARAT**
Color Grade **D**
Clarity Grade **INTERNALLY FLAWLESS**

ADDITIONAL GRADING INFORMATION

Polish **EXCELLENT**
Symmetry **EXCELLENT**
Fluorescence **NONE**
Inscription(s) **IGI LG754593773**

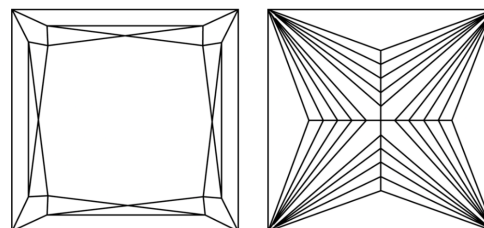
Comments: As Grown - No indication of post-growth treatment.
This Laboratory Grown Diamond was created by High Pressure High Temperature (HPHT) growth process. Type II

PROPORTIONS



Sample Image Used

CLARITY CHARACTERISTICS



KEY TO SYMBOLS

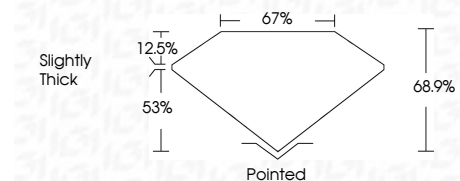
Red symbols indicate internal characteristics.
Green symbols indicate external characteristics.

COLOR

D E F G H I J Faint Very Light Light

CLARITY

| FL | IF | VS ¹⁻² | VS ¹⁻² | SI ¹⁻² | I ¹⁻³ |
|----------|---------------------|-----------------------------|------------------------|-------------------|------------------|
| Flawless | Internally Flawless | Very Very Slightly Included | Very Slightly Included | Slightly Included | Included |



ADDITIONAL GRADING INFORMATION

Polish **EXCELLENT**
Symmetry **EXCELLENT**
Fluorescence **NONE**
Inscription(s) **IGI LG754593773**
Comments: As Grown - No indication of post-growth treatment.
This Laboratory Grown Diamond was created by High Pressure High Temperature (HPHT) growth process. Type II



IGI



February 2, 2026
IGI Report No LG754593773
PRINCESS CUT
6.65 X 6.50 X 4.48 MM
1.71 CARAT
D
Color Grade
Depth 68.9%
Table 12.5%
Girdle 67%
Slightly Thick
Pointed
EXCELLENT
EXCELLENT
NONE
IGI LG754593773

Comments: As Grown - No indication of post-growth treatment.
This Laboratory Grown Diamond was created by High Pressure High Temperature (HPHT) growth process. Type II