



ELECTRONIC COPY

LABORATORY GROWN DIAMOND REPORT

November 26, 2025	
IGI Report Number	LG747508339
Description	LABORATORY GROWN DIAMOND
Shape and Cutting Style	ROUND BRILLIANT
Measurements	10.56 - 10.59 X 6.43 MM

GRADING RESULTS

Carat Weight	4.39 CARATS
Color Grade	D
Clarity Grade	FLAWLESS
Cut Grade	IDEAL

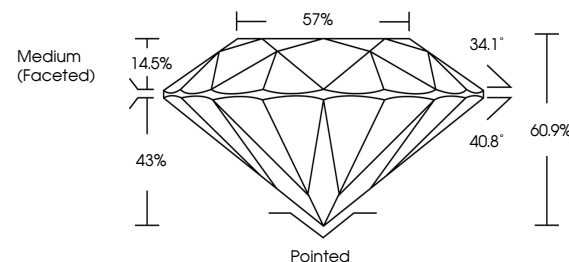
ADDITIONAL GRADING INFORMATION

Polish	EXCELLENT
Symmetry	EXCELLENT
Fluorescence	NONE
Inscription(s)	 LG747508339

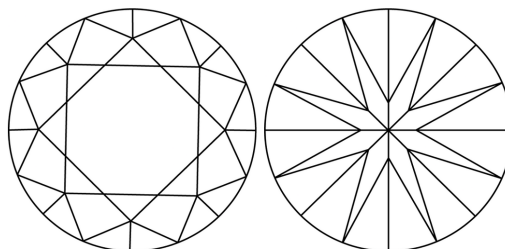
Comments: HEARTS & ARROWS
As Grown - No indication of post-growth treatment.
This Laboratory Grown Diamond was created by High
Pressure High Temperature (HPHT) growth process.
Type II

LG747508339
Report verification at lgi.org

PROPORTIONS

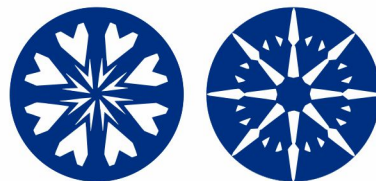


CLARITY CHARACTERISTICS

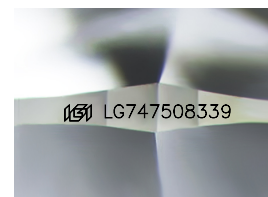


KEY TO SYMBOLS

Red symbols indicate internal characteristics.
Green symbols indicate external characteristics.



www.igi.org



Sample Image Used

COLOR

D E F G H I J Faint Very Light Light

CLARITY

FL	IF	VVS ¹⁻²	VS ¹⁻²	SI ¹⁻²	I ¹⁻³
Flawless	Internally Flawless	Very Very Slightly Included	Very Slightly Included	Slightly Included	Included

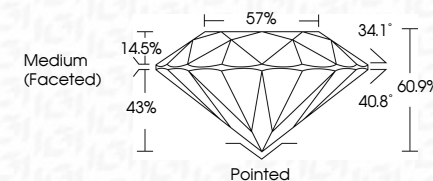


November 26, 2025	
IGI Report Number	LG747508339
Description	LABORATORY GROWN DIAMOND

Shape and Cutting Style	ROUND BRILLIANT
Measurements	10.56 - 10.59 X 6.43 MM

GRADING RESULTS

Carat Weight	4.39 CARATS
Color Grade	D
Clarity Grade	FLAWLESS
Cut Grade	IDEAL



ADDITIONAL GRADING INFORMATION

Polish	EXCELLENT
Symmetry	EXCELLENT
Fluorescence	NONE
Inscription(s)	 LG747508339

Comments: HEARTS & ARROWS
As Grown - No indication of post-growth treatment.
This Laboratory Grown Diamond was created by High
Pressure High Temperature (HPHT) growth process.
Type II



© IGI 2020, International Gemological Institute

FD - 10 20



THIS DOCUMENT WAS PRODUCED WITH THE FOLLOWING SECURITY MEASURES: SPECIAL DOCUMENT PAPER, INK SCREENS, WATERMARK, BACKGROUND DESIGNS, HOLOGRAM AND OTHER SECURITY FEATURES NOT LISTED AND DO EXCEED DOCUMENT SECURITY INDUSTRY GUIDELINE

November 26, 2025
IGI Report No LG747508339
ROUND BRILLIANT

	Carat Weight	10.69 - 10.89 X 6.43 MM	4.39 CARATS
	Color Grade		D
	Clarity Grade		FLAWLESS
	Cut Grade		IDP AL
	Depth		60.9%
	Table		57%
	Girdle		Medium (Faceted)
	Culet		Pointed
	Polish		EXCELLENT
	Symmetry		EXCELLENT
	Fluorescence		NONE
	Inscriptions		see lot certificate

Comments:
HEARTS & ARROWS
As Grown - No Indication of post-growth
treatment
This Laboratory Grown Diamond was
created by High Pressure High
Temperature (HPHT) growth process.