

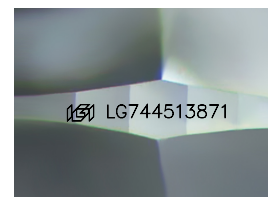
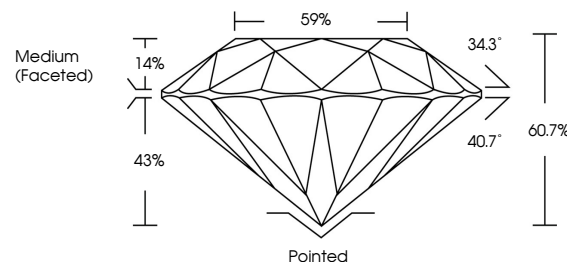


ELECTRONIC COPY

LABORATORY GROWN DIAMOND REPORT

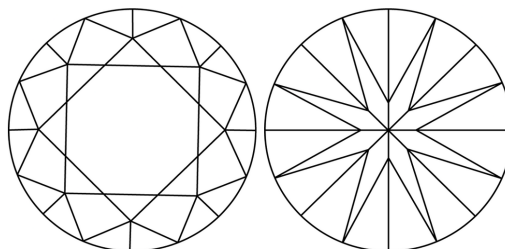
LG744513871
Report verification at lgi.org

PROPORTIONS



Sample Image Used

CLARITY CHARACTERISTICS



KEY TO SYMBOLS

Red symbols indicate internal characteristics.
Green symbols indicate external characteristics.



www.igi.org

LABORATORY GROWN DIAMOND REPORT



December 18, 2025

IGI Report Number **LG744513871**Description **LABORATORY GROWN DIAMOND**Shape and Cutting Style **ROUND BRILLIANT**

Measurements 6.48 - 6.51 X 3.94 MM

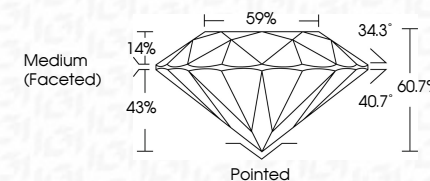
GRADING RESULTS

Carat Weight 1.02 CARAT

Color Grade

Clarity Grade **INTERNALLY FLAWLESS**

Cut Grade **IDEAL**



ADDITIONAL GRADING INFORMATION

Polish EXCELLENT

Symmetry **EXCELLENT**Fluorescence **NONE**Inscription(s) LG744513871

Comments: HEARTS & ARROWS

As Grown - No indication of post-growth treatment.

This Laboratory Grown Diamond was created by High

Pressure High Temperature (HPHT) growth process.

Type II

[illegible]

© IGI 2020, International Gemological Institute

FD - 10 20



THIS DOCUMENT WAS PRODUCED WITH THE FOLLOWING SECURITY MEASURES: SPECIAL DOCUMENT PAPER, INK SCREENS, WATERMARK BACKGROUND DESIGNS, HOLOGRAM AND OTHER SECURITY FEATURES NOT LISTED AND DO EXCEED DOCUMENT SECURITY INDUSTRY GUIDELINES