

**ELECTRONIC COPY**

## LABORATORY GROWN DIAMOND REPORT

October 15, 2025	
IGI Report Number	LG741594889
Description	LABORATORY GROWN DIAMOND
Shape and Cutting Style	SQUARE CUSHION MODIFIED BRILLIANT
Measurements	8.73 X 8.54 X 5.58 MM

## GRADING RESULTS

Carat Weight	3.24 CARATS
Color Grade	D
Clarity Grade	INTERNALLY FLAWLESS

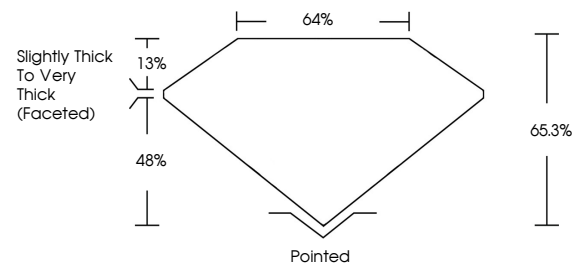
### ADDITIONAL GRADING INFORMATION

Polish	EXCELLENT
Symmetry	EXCELLENT
Fluorescence	NONE
Inscription(s)	 LG741594889

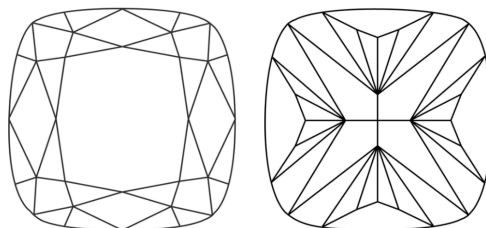
Comments: As Grown - No indication of post-growth treatment.  
This Laboratory Grown Diamond was created by High Pressure High Temperature (HPHT) growth process.  
Type II

LG741594889  
Report verification at [igi.org](https://igi.org)

## PROPORTIONS

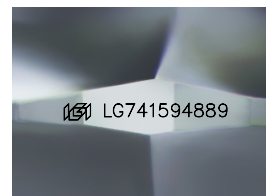


## CLARITY CHARACTERISTICS



## KEY TO SYMBOLS

Red symbols indicate internal characteristics.  
Green symbols indicate external characteristics.



Sample Image Used

**COLOR**

D E F G H I J Faint Very Light Light

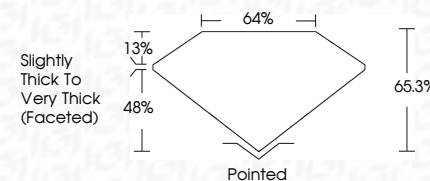
## CLARITY

FL	IF	VVS <sup>1-2</sup>	VS <sup>1-2</sup>	SI <sup>1-2</sup>	I <sup>1-3</sup>
Flawless	Internally Flawless	Very Very Slightly Included	Very Slightly Included	Slightly Included	Included

## LABORATORY GROWN DIAMOND REPORT



October 15, 2025	
IGI Report Number	LG741594889
Description	LABORATORY GROWN DIAMOND
Shape and Cutting Style	SQUARE CUSHION MODIFIED BRILLIANT
Measurements	8.73 X 8.54 X 5.58 MM
GRADING RESULTS	
Carat Weight	3.24 CARATS
Color Grade	D
Clarity Grade	INTERNALLY FLAWLESS



### ADDITIONAL GRADING INFORMATION

Polish	EXCELLENT
Symmetry	EXCELLENT
Fluorescence	NONE
Inscription(s)	 LG741594889
Comments: As Grown - No indication of post-growth treatment.	
This Laboratory Grown Diamond was created by High Pressure High Temperature (HPHT) growth process.	
Type II	



© IGI 2020, International Gemological Institute

FD - 10 20

October 15, 2025	GI Report No LG71594899	
SQUARE CUSHION MODIFIED BRILLIANT		
3.24 CARATS	D	IF
		65.3%
		64%
		Slightly Thick to Very Thick (Faceted)
		Paired
		EXCELLENT
		EXCELLENT
		NONE
		#61 LG71594899

Comments:

As Grown - No indication of post-growth treatment

This Laboratory Grown Diamond was created by High Pressure High Temperature (HPHT) growth process.