



ELECTRONIC COPY

LABORATORY GROWN DIAMOND REPORT

October 9, 2025	
IGI Report Number	LG739553700
Description	LABORATORY GROWN DIAMOND
Shape and Cutting Style	EMERALD CUT
Measurements	8.35 X 5.83 X 3.94 MM

GRADING RESULTS

Carat Weight	1.94 CARAT
Color Grade	D
Clarity Grade	INTERNALLY FLAWLESS

ADDITIONAL GRADING INFORMATION

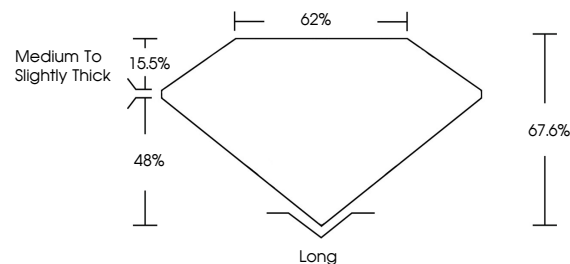
Polish	EXCELLENT
Symmetry	EXCELLENT
Fluorescence	NONE
Inscription(s)	15 LG739553700

Comments: As Grown - No indication of post-growth treatment.

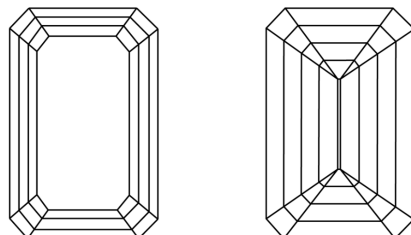
This Laboratory Grown Diamond was created by High Pressure High Temperature (HPHT) growth process.
Type II

LG739553700
Report verification at lgi.org

PROPORTIONS

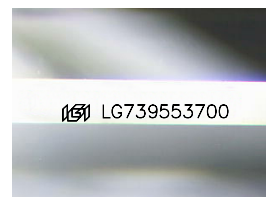


CLARITY CHARACTERISTICS



KEY TO SYMBOLS

Red symbols indicate internal characteristics.
Green symbols indicate external characteristics.



Sample Image Used

COLOR

D E F G H I J Faint Very Light Light

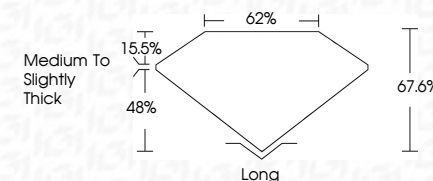
CLARITY

FL	IF	VVS ¹⁻²	VS ¹⁻²	SI ¹⁻²	I ¹⁻³
Flawless	Internally Flawless	Very Very Slightly Included	Very Slightly Included	Slightly Included	Included

LABORATORY GROWN DIAMOND REPORT



October 9, 2025	
IGI Report Number	LG739553700
Description	LABORATORY GROWN DIAMOND
Shape and Cutting Style	EMERALD CUT
Measurements	8.35 X 5.83 X 3.94 MM
GRADING RESULTS	
Carat Weight	1.94 CARAT
Color Grade	D
Clarity Grade	INTERNALLY FLAWLESS



ADDITIONAL GRADING INFORMATION

Polish	EXCELLENT
Symmetry	EXCELLENT
Fluorescence	NONE
Inscription(s)	165 LG739553700
Comments: As Grown - No indication of post-growth treatment.	
This Laboratory Grown Diamond was created by High Pressure High Temperature (HPHT) growth process.	
Type II	



© IGI 2020, International Gemological Institute

FD - 10 20



THIS DOCUMENT WAS PRODUCED WITH THE FOLLOWING SECURITY MEASURES: SPECIAL DOCUMENT PAPER, INK SCREENS, WATERMARK, BACKGROUND DESIGNS, HOLOGRAM AND OTHER SECURITY FEATURES NOT LISTED AND DO EXCEED DOCUMENT SECURITY INDUSTRY GUIDELINES

www.igi.org

October 9, 2026	1.94 CARAT D IF 67.6% 62% Medium to slightly Thick Long Excellent Excellent None #69 LG79553700	
3.35 X 5.83 X 3.94 MM Curat Weight Color Grade Clarity Grade Depth Table Girdle Culet Polish Symmetry Fluorescence Inclusions(s)	1.94 CARAT D IF 67.6% 62% Medium to slightly Thick Long Excellent Excellent None #69 LG79553700	Comments: 1. No indication of post-growth treatment. 2. The Laboratory Grown Diamond was created by High Pressure High Temperature (HPHT) growth process. Type II