

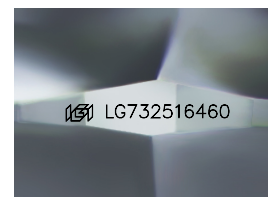
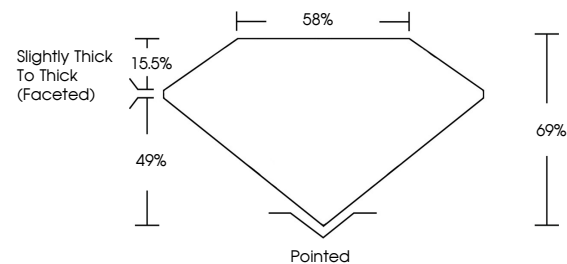


**ELECTRONIC COPY**

## LABORATORY GROWN DIAMOND REPORT

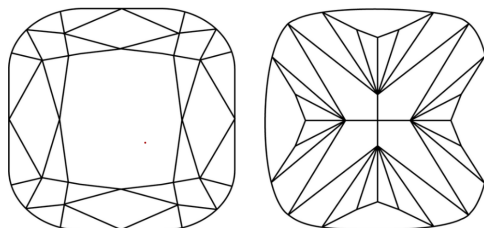
LG732516460  
Report verification at [igi.org](https://igi.org)

## PROPORTIONS



Sample Image Used

## CLARITY CHARACTERISTICS



## KEY TO SYMBOLS

Red symbols indicate internal characteristics.  
Green symbols indicate external characteristics.

## COLOR

D E F G H I J Faint Very Light Light

## CLARITY

IF	VS <sup>1-2</sup>	VS <sup>1-2</sup>	SI <sup>1-2</sup>	I <sup>1-3</sup>
Internally Flawless	Very Very Slightly Included	Very Slightly Included	Slightly Included	Included

## LABORATORY GROWN DIAMOND REPORT



September 23, 2025

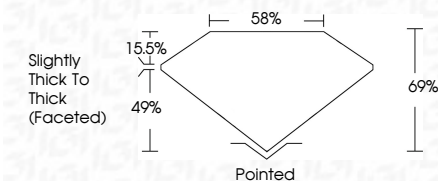
IGI Report Number **LG732516460**Description **LABORATORY GROWN DIAMOND**Shape and Cutting Style **SQUARE CUSHION MODIFIED  
BRILLIANT**

Measurements **7.44 X 7.19 X 4.96 MM**

## GRADING RESULTS

Carat Weight **2.04 CARATS**

Color Grade D

Clarity Grade **VVS 2**

### ADDITIONAL GRADING INFORMATION

Polish EXCELLENT

Symmetry **EXCELLENT**Fluorescence **NONE**Inscription(s)  LG732516460

Comments: As Grown - No indication of post-growth treatment.

This Laboratory Grown Diamond was created by High Pressure High Temperature (HPHT) growth process.  
Type II



© IGI 2020, International Gemological Institute

FD - 10 20

**www.igi.org**

THIS DOCUMENT WAS PRODUCED WITH THE FOLLOWING SECURITY MEASURES: SPECIAL DOCUMENT PAPER, INK SCREENS, WATERMARK BACKGROUND DESIGNS, HOLOGRAM AND OTHER SECURITY FEATURES NOT LISTED AND DO EXCEED DOCUMENT SECURITY INDUSTRY GUIDELINES

September 23, 2025  
 IGI Report No LG7325  
 SQUARE CUSHION MO

7.44 X 7.19 X 4.96 MM	2.04 CARATS	D	VVS 2	66%	56%	Slightly Thick To Thick (graded)	Pointed	EXCELLENT	EXCELLENT	NONE	100% (12795) 16400
Carat Weight	Color Grade	Clarity Grade	Depth	Table	Girdle		Quiet	Symmetry	Fluorescence	Measurements (mm)	

**Comments:**  
As Grown - No Indication of post-growth treatment.  
This Laboratory Grown Diamond was created by High Pressure High Temperature (HPHT) growth process.