



**ELECTRONIC COPY**

## LABORATORY GROWN DIAMOND REPORT

September 2, 2025	
IGI Report Number	LG731569299
Description	LABORATORY GROWN DIAMOND
Shape and Cutting Style	PRINCESS CUT
Measurements	7.39 X 7.37 X 5.39 MM

## GRADING RESULTS

Carat Weight	2.61 CARATS
Color Grade	D
Clarity Grade	INTERNALLY FLAWLESS

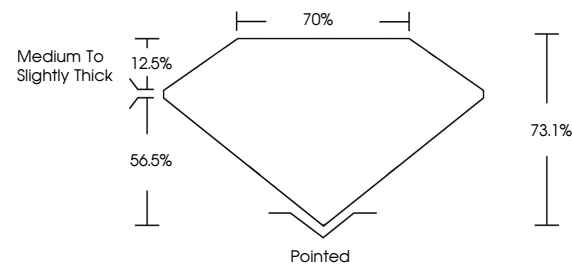
### ADDITIONAL GRADING INFORMATION

Polish	EXCELLENT
Symmetry	EXCELLENT
Fluorescence	NONE
Inscription(s)	131 LG731569299

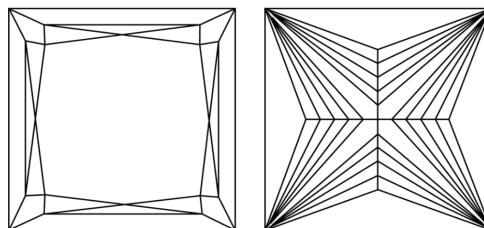
Comments: As Grown - No indication of post-growth treatment.  
This Laboratory Grown Diamond was created by High Pressure High Temperature (HPHT) growth process.  
Type II

LG731569299  
Report verification at [igi.org](https://igi.org)

## PROPORTIONS

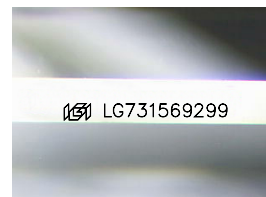


## CLARITY CHARACTERISTICS



### KEY TO SYMBOLS

Red symbols indicate internal characteristics.  
Green symbols indicate external characteristics.



Sample Image Used

## COLOR

D E F G H I J Faint Very Light Light

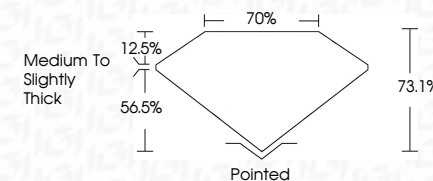
## CLARITY

IF	VVS <sup>1-2</sup>	VS <sup>1-2</sup>	SI <sup>1-2</sup>	I <sup>1-3</sup>
Internally Flawless	Very Very Slightly Included	Very Slightly Included	Slightly Included	Included

## LABORATORY GROWN DIAMOND REPORT



September 2, 2025	
IGI Report Number	LG731569299
Description	LABORATORY GROWN DIAMOND
Shape and Cutting Style	PRINCESS CUT
Measurements	7.39 X 7.37 X 5.39 MM
GRADING RESULTS	
Carat Weight	2.61 CARATS
Color Grade	D
Clarity Grade	INTERNALLY FLAWLESS



### ADDITIONAL GRADING INFORMATION

Polish	EXCELLENT
Symmetry	EXCELLENT
Fluorescence	NONE
Inscription(s)	 LG731569299
Comments: As Grown - No indication of post-growth treatment.	
This Laboratory Grown Diamond was created by High Pressure High Temperature (HPHT) growth process.	
Type II	



© IGI 2020, International Gemological Institute

FD - 10 20

**www.igi.org**



THIS DOCUMENT WAS PRODUCED WITH THE FOLLOWING SECURITY MEASURES: SPECIAL DOCUMENT PAPER, INK SCREENS, WATERMARK, BACKGROUND DESIGNS, HOLOGRAM AND OTHER SECURITY FEATURES NOT LISTED AND DO EXCEED DOCUMENT SECURITY INDUSTRY GUIDELINES

September 2, 2025  
 LGI Report No LG731569299

<b>GI Report NO LG731569599</b>	
<b>PRINCESS CUT</b>	
<b>.99 X 7.37 X 5.39 MM</b>	<b>2.61 CARATS</b>
<b>Carat Weight</b>	<b>D</b>
<b>Color Grade</b>	<b>I/F</b>
<b>Clarity Grade</b>	<b>73-1%</b>
<b>Depth</b>	<b>70%</b>
<b>Table</b>	<b>Medium To Slightly Thick</b>
<b>Girdle</b>	<b>Pointed</b>
<b>Culet</b>	<b>EXCELLENT</b>
<b>Polish</b>	<b>EXCELLENT</b>
<b>Symmetry</b>	<b>NONE</b>
<b>Fluorescence</b>	

**Comments:**  
As Grown - No Indication of post-growth treatment.  
This Laboratory Grown Diamond was created by High Pressure High temperature (HPHT) growth process.