

ELECTRONIC COPY

LABORATORY GROWN DIAMOND REPORT

| | |
|-------------------------|----------------------------|
| August 6, 2025 | |
| IGI Report Number | LG727510781 |
| Description | LABORATORY GROWN DIAMOND |
| Shape and Cutting Style | CUSHION MODIFIED BRILLIANT |
| Measurements | 8.26 X 6.74 X 4.75 MM |

GRADING RESULTS

| | |
|---------------|---------------------|
| Carat Weight | 1.97 CARAT |
| Color Grade | D |
| Clarity Grade | INTERNALLY FLAWLESS |

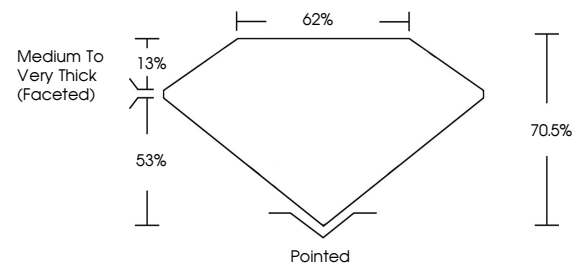
ADDITIONAL GRADING INFORMATION

| | |
|----------------|---|
| Polish | EXCELLENT |
| Symmetry | EXCELLENT |
| Fluorescence | NONE |
| Inscription(s) |  LG727510781 |

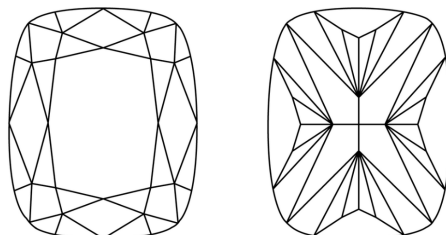
Comments: As Grown - No indication of post-growth treatment.
This Laboratory Grown Diamond was created by High Pressure High Temperature (HPHT) growth process.
Type II

LG727510781
Report verification at igi.org

PROPORTIONS

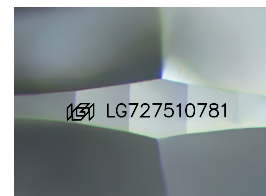


CLARITY CHARACTERISTICS



KEY TO SYMBOLS

Red symbols indicate internal characteristics.
Green symbols indicate external characteristics.



Sample Image Used

COLOR

D E F G H I J Faint Very Light Light

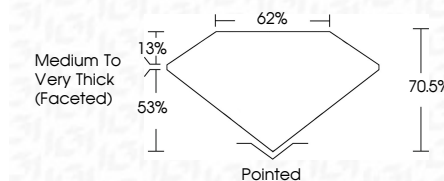
CLARITY

| IF | VVS ¹⁻² | VS ¹⁻² | SI ¹⁻² | I ¹⁻³ |
|---------------------|-----------------------------|------------------------|-------------------|------------------|
| Internally Flawless | Very Very Slightly Included | Very Slightly Included | Slightly Included | Included |

LABORATORY GROWN DIAMOND REPORT



| | |
|-------------------------|-------------------------------|
| August 6, 2025 | |
| IGI Report Number | LG727510781 |
| Description | LABORATORY GROWN DIAMOND |
| Shape and Cutting Style | CUSHION MODIFIED BRILLIANT |
| Measurements | 8.26 X 6.74 X 4.75 MM |
| GRADING RESULTS | |
| Carat Weight | 1.97 CARAT |
| Color Grade | D |
| Clarity Grade | INTERNALLY FLAWLESS |



ADDITIONAL GRADING INFORMATION

| | |
|--|----------------------------|
| Polish | EXCELLENT |
| Symmetry | EXCELLENT |
| Fluorescence | NONE |
| Inscription(s) | 161 LG727510781 |
| Comments: As Grown - No indication of post-growth treatment. | |
| This Laboratory Grown Diamond was created by High Pressure High Temperature (HPHT) growth process. | |
| Type II | |



© IGI 2020, International Gemological Institute

FD - 10 20

www.igi.org

THIS DOCUMENT WAS PRODUCED WITH THE FOLLOWING SECURITY MEASURES: SPECIAL DOCUMENT PAPER, INK SCREENS, WATERMARK, BACKGROUND DESIGNS, HOLOGRAM AND OTHER SECURITY FEATURES NOT LISTED AND DO EXCEED DOCUMENT SECURITY INDUSTRY GUIDELINE

| | | |
|----------------------------|--|-------------|
| August 6, 2025 | Report No. 16372151781 | 1.97 CARAT |
| CUSHION MODIFIED BRILLIANT | | D |
| 26.26 X 16.74 X 4.75 MM | | 1F |
| | | 70.6% |
| | | 62% |
| | Medium to Very Thick (pocketed) | |
| | | Poished |
| | | EXCELLENT |
| | | EXCELLENT |
| | | NONE |
| | | 16372151781 |
| Comments: | No Growth - No indication of post-growth. | |
| | This Laboratory Grown Diamond was created by High Pressure High temperature (HPHT) growth process. | |