



ELECTRONIC COPY

LABORATORY GROWN DIAMOND REPORT

| | |
|-------------------------|--------------------------|
| July 21, 2025 | |
| IGI Report Number | LG722576009 |
| Description | LABORATORY GROWN DIAMOND |
| Shape and Cutting Style | PRINCESS CUT |
| Measurements | 7.94 X 7.85 X 5.48 MM |

GRADING RESULTS

| | |
|---------------|-------------|
| Carat Weight | 3.02 CARATS |
| Color Grade | D |
| Clarity Grade | VVS 1 |

ADDITIONAL GRADING INFORMATION

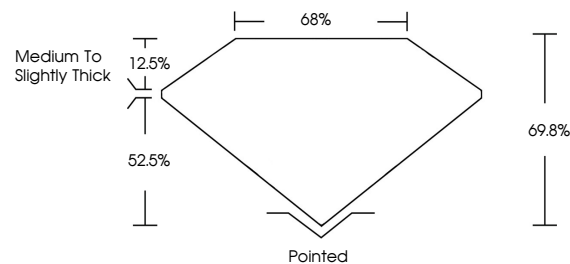
| | |
|----------------|-----------------|
| Polish | EXCELLENT |
| Symmetry | EXCELLENT |
| Fluorescence | NONE |
| Inscription(s) | 131 LG722576009 |

Comments: As Grown - No indication of post-growth treatment.

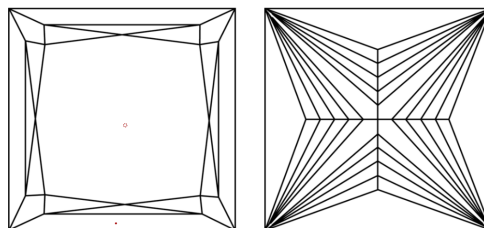
This Laboratory Grown Diamond was created by High Pressure High Temperature (HPHT) growth process.
Type II

LG722576009
Report verification at igi.org

PROPORTIONS

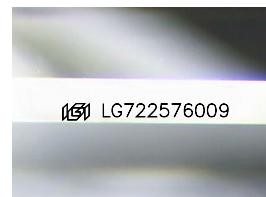


CLARITY CHARACTERISTICS



KEY TO SYMBOLS

Red symbols indicate internal characteristics.
Green symbols indicate external characteristics.



Sample Image Used

COLOR

D E F G H I J Faint Very Light Light

CLARITY

| IF | VVS ¹⁻² | VS ¹⁻² | SI ¹⁻² | I ¹⁻³ |
|---------------------|-----------------------------|------------------------|-------------------|------------------|
| Internally Flawless | Very Very Slightly Included | Very Slightly Included | Slightly Included | Included |

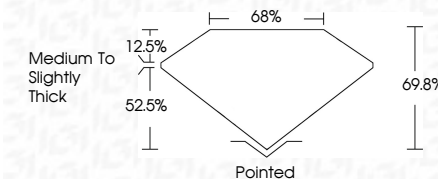
LABORATORY GROWN DIAMOND REPORT



| | |
|-------------------------|--------------------------|
| July 21, 2025 | |
| IGI Report Number | LG722576009 |
| Description | LABORATORY GROWN DIAMOND |
| Shape and Cutting Style | PRINCESS CUT |
| Measurements | 7.94 X 7.85 X 5.48 MM |

GRADING RESULTS

| | |
|---------------|-------------|
| Carat Weight | 3.02 CARATS |
| Color Grade | D |
| Clarity Grade | VVS 1 |



ADDITIONAL GRADING INFORMATION

| | |
|--|----------------------------|
| Polish | EXCELLENT |
| Symmetry | EXCELLENT |
| Fluorescence | NONE |
| Inscription(s) | (G) LG722576009 |
| Comments: As Grown - No indication of post-growth treatment. | |
| This Laboratory Grown Diamond was created by High Pressure High Temperature (HPHT) growth process. | |
| Type II | |



© IGI 2020, International Gemological Institute

FD - 10 20



THIS DOCUMENT WAS PRODUCED WITH THE FOLLOWING SECURITY MEASURES: SPECIAL DOCUMENT PAPER, INK SCREENS, WATERMARK, BACKGROUND DESIGNS, HOLOGRAM AND OTHER SECURITY FEATURES NOT LISTED AND DO EXCEED DOCUMENT SECURITY INDUSTRY GUIDELINES

www.igi.org

July 21, 2025
 CGI Report No LG722576009
 PRINCESS CIT

| | | |
|------------------------------|---------------------|----------------------------------|
| 9.94 X 7.85 X 5.68 MM | Carat Weight | 3.02 CARATS |
| D | Color Grade | VVS 1 |
| Clarity Grade | Depth | 66.8% |
| Table | Grade | 68% |
| Culet | Symmetry | Medium To Slightly Tinted |
| Polish | Fluorescence | None |
| Grading Report # | Report # | GIA 2181272872 |

Comments:
As Grown - No Indication of post-growth treatment.
This Laboratory Grown Diamond was created by High Pressure High temperature (HPHT) growth process.