

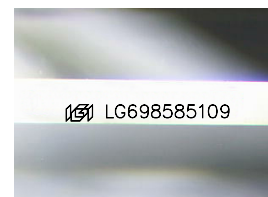
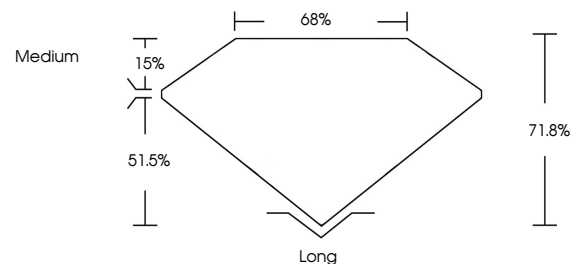


ELECTRONIC COPY

LABORATORY GROWN DIAMOND REPORT

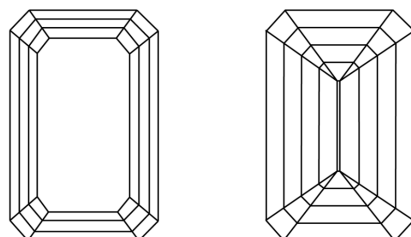
LG698585109
Report verification at igi.org

PROPORTIONS



Sample Image Used

CLARITY CHARACTERISTICS



KEY TO SYMBOLS

Red symbols indicate internal characteristics.
Green symbols indicate external characteristics.

COLOR

D E F G H I J Faint Very Light Light

CLARITY

IF	VS ¹⁻²	VS ¹⁻²	SI ¹⁻²	I ¹⁻³
Internally Flawless	Very Very Slightly Included	Very Slightly Included	Slightly Included	Included

LABORATORY GROWN DIAMOND REPORT



April 24, 2025

IGI Report Number **LG698585109**Description **LABORATORY GROWN DIAMOND**

Shape and Cutting Style **EMERALD CUT**

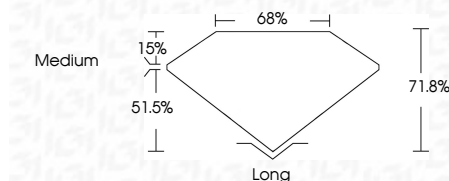
Measurements **9.53 X 6.57 X 4.72 MM**

GRADING RESULTS

Carat Weight **3.01 CARATS**

Color Grade	D
-------------	---

Clarity Grade **INTERNALLY FLAWLESS**



ADDITIONAL GRADING INFORMATION

Polish **EXCELLENT**Symmetry **EXCELLENT**Fluorescence **NONE**Inscription(s) LG698585109

Comments: As Grown - No indication of post-growth treatment.

This Laboratory Grown Diamond was created by High Pressure High Temperature (HPHT) growth process.
Type II



Report Date: 2025-04-24	Report No: LG569655109	Client: CHAND OUT
Size: 6.53 X 4.57 X 4.72 MM	Color Grade: D	Carat Weight: 3.01 CARATS
Clarity Grade: Very Good	Depth: 71.8%	LF: 68%
Table: Excellent	Spread: Medium	
Girdle: Medium	Long: Excellent	
Culet: None	Excellent	
Polish: Excellent	Excellent	
Symmetry: Excellent	None	
Fluorescence: None	169 LG569655109	
Description(s):		
Comments:		
As Grown - No Indication of post-growth treatment.		
This Laboratory Grown Diamond was created by High Pressure High Temperature (HPHT) growth process.		
Type II		

