

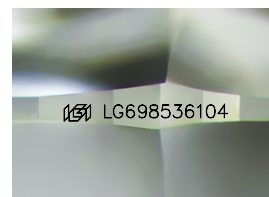
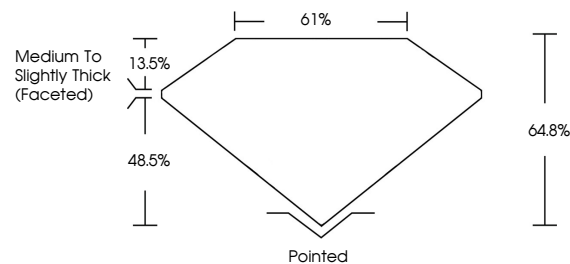


**ELECTRONIC COPY**

## LABORATORY GROWN DIAMOND REPORT

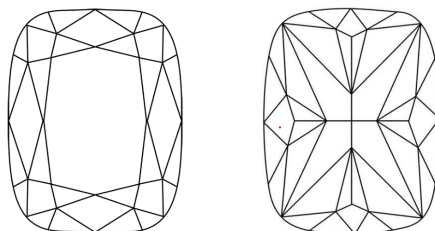
LG698536104  
Report verification at [igi.org](https://igi.org)

## PROPORTIONS



Sample Image Used

## CLARITY CHARACTERISTICS



### KEY TO SYMBOLS

Red symbols indicate internal characteristics.  
Green symbols indicate external characteristics.

## COLOR

D E F G H I J Faint Very Light Light

## CLARITY

IF	VS <sup>1-2</sup>	VS <sup>1-2</sup>	SI <sup>1-2</sup>	I <sup>1-3</sup>
Internally Flawless	Very Very Slightly Included	Very Slightly Included	Slightly Included	Included

## LABORATORY GROWN DIAMOND REPORT



April 17, 2025

IGI Report Number LG698536104

Description **LABORATORY GROWN DIAMOND**

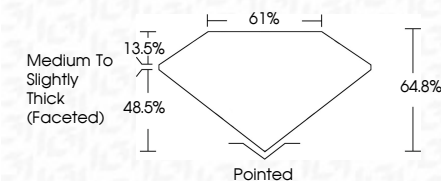
Shape and Cutting Style **CUSHION MODIFIED  
BRILLIANT**

Measurements 6.93 X 5.43 X 3.52 MM

## GRADING RESULTS

Carat Weight 1.02 CARAT

Color Grade

Clarity Grade VVS 1

### ADDITIONAL GRADING INFORMATION

Polish **EXCELLENT**Symmetry **EXCELLENT**Fluorescence **NONE**Inscription(s)  LG698536104

Comments: As Grown - No indication of post-growth treatment.

This Laboratory Grown Diamond was created by High Pressure High Temperature (HPHT) growth process.

Type II



IG



© IGI 2020, International Gemological Institute

FD - 10 20



THIS DOCUMENT WAS PRODUCED WITH THE FOLLOWING SECURITY MEASURES: SPECIAL DOCUMENT PAPER, INK SCREENS, WATERMARK, BACKGROUND DESIGNS, HOLOGRAM AND OTHER SECURITY FEATURES NOT LISTED AND DO EXCEED DOCUMENT SECURITY INDUSTRY GUIDELINES

April 17, 2025  
 IGI Report No L  
 CUSHION MODI

6.93 X 5.43 X 3.52 MM	1.02 CARAT
Carat Weight	D
Color Grade	VVS 1
Clarity Grade	64.6%
Depth	61%
Table	Medium To Slightly Thick (excellent)
Girdle	
Culet	Pointed
Polish	EXCELLENT
Symmetry	EXCELLENT
Fluorescence	NONE
Inscriptions(s)	4811 (GIA) 953104

**Comments:**  
As Grown - No indication of post-growth treatment  
This Laboratory Grown Diamond was created by High Pressure High Temperature (HPHT) growth process.

**www.igi.org**