

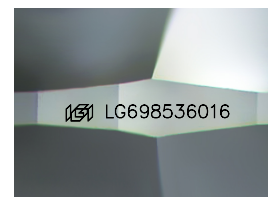
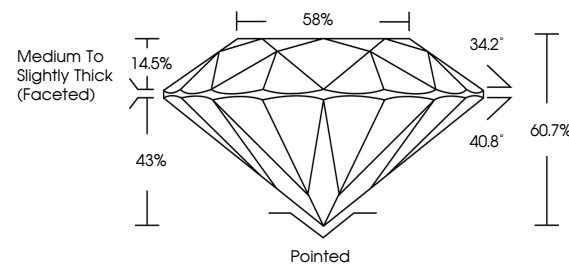


ELECTRONIC COPY

LABORATORY GROWN DIAMOND REPORT

LG698536016
Report verification at igi.org

PROPORTIONS



Sample Image Used

CLARITY CHARACTERISTICS



KEY TO SYMBOLS

Red symbols indicate internal characteristics.
Green symbols indicate external characteristics.



www.igi.org

LABORATORY GROWN DIAMOND REPORT



April 25, 2025

IGI Report Number **LG698536016**Description **LABORATORY GROWN DIAMOND**Shape and Cutting Style **ROUND BRILLIANT**

Measurements 9.94 - 9.98 X 6.04 MM

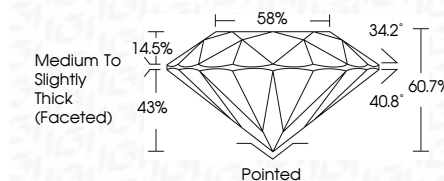
GRADING RESULTS

Carat Weight **3.68 CARATS**

Color Grade D

Clarity Grade **INTERNALLY FLAWLESS**

Cut Grade **IDEAL**



ADDITIONAL GRADING INFORMATION

Polish **EXCELLENT**Symmetry **EXCELLENT**Fluorescence **NONE**Inscription(s) LG698536016

Comments: HEARTS & ARROWS

As Grown - No indication of post-growth treatment.
This Laboratory Grown Diamond was created by High Pressure High Temperature (HPHT) growth process.
Type II



IG

© IGI 2020, International Gemological Institute

FD - 10 20



THIS DOCUMENT WAS PRODUCED WITH THE FOLLOWING SECURITY MEASURES: SPECIAL DOCUMENT PAPER, INK SCREENS, WATERMARK, BACKGROUND DESIGNS, HOLOGRAM AND OTHER SECURITY FEATURES NOT LISTED AND DO EXCEED DOCUMENT SECURITY INDUSTRY GUIDELINES

April 25, 2025
ICI Report No LG698536016
ROUND BRILLIANT

9.94 - 9.98 X 6.04 MM		3.68 CARATS	
Carat Weight		Color Grade	D
Clarity Grade		Cut Grade	IF
Depth		Table	IDEAL
Girdle			60.7%
			58%
			Medium To Slightly Thick (Faceted)
Culet			Pointed
Polish			EXCELLENT
Symmetry			EXCELLENT
Fluorescence			NONE
100% Natural		100% Guaranteed	

Comments:
HEARTS & ARROWS
As Grown - No indication of post-growth treatment.
This Laboratory Grown Diamond was created by High Pressure High Temperature (HPHT) growth process.