



**ELECTRONIC COPY**

## LABORATORY GROWN DIAMOND REPORT

|                         |                            |
|-------------------------|----------------------------|
| April 3, 2025           |                            |
| IGI Report Number       | LG695505032                |
| Description             | LABORATORY GROWN DIAMOND   |
| Shape and Cutting Style | CUSHION MODIFIED BRILLIANT |
| Measurements            | 6.67 X 5.39 X 3.61 MM      |

## GRADING RESULTS

|               |            |
|---------------|------------|
| Carat Weight  | 1.03 CARAT |
| Color Grade   | D          |
| Clarity Grade | VVS 1      |

### ADDITIONAL GRADING INFORMATION

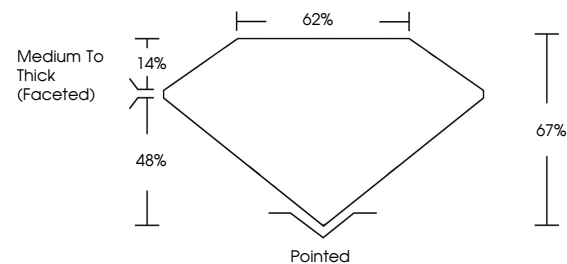
|                |                |
|----------------|----------------|
| Polish         | EXCELLENT      |
| Symmetry       | EXCELLENT      |
| Fluorescence   | NONE           |
| Inscription(s) | 15 LG695505032 |

Comments: As Grown - No indication of post-growth treatment.

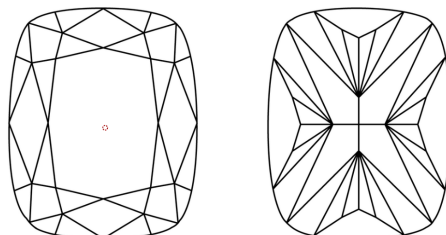
This Laboratory Grown Diamond was created by High Pressure High Temperature (HPHT) growth process.  
Type II

LG695505032  
Report verification at [igi.org](https://igi.org)

## PROPORTIONS

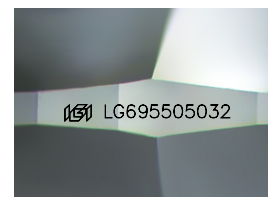


## CLARITY CHARACTERISTICS



### KEY TO SYMBOLS

Red symbols indicate internal characteristics.  
Green symbols indicate external characteristics.



Sample Image Used

## COLOR

D E F G H I J Faint Very Light Light

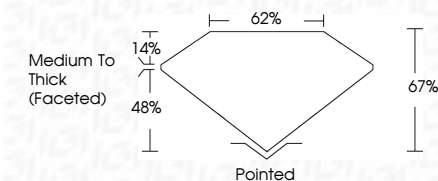
## CLARITY

| IF                  | VS <sup>1-2</sup>           | VS <sup>1-2</sup>      | SI <sup>1-2</sup> | I <sup>1-3</sup> |
|---------------------|-----------------------------|------------------------|-------------------|------------------|
| Internally Flawless | Very Very Slightly Included | Very Slightly Included | Slightly Included | Included         |

## LABORATORY GROWN DIAMOND REPORT



|                         |                               |
|-------------------------|-------------------------------|
| April 3, 2025           |                               |
| IGI Report Number       | LG695505032                   |
| Description             | LABORATORY GROWN DIAMOND      |
| Shape and Cutting Style | CUSHION MODIFIED<br>BRILLIANT |
| Measurements            | 6.67 X 5.39 X 3.61 MM         |
| GRADING RESULTS         |                               |
| Carat Weight            | 1.03 CARAT                    |
| Color Grade             | D                             |
| Clarity Grade           | VVS 1                         |



### ADDITIONAL GRADING INFORMATION

|  |                            |
|--|----------------------------|
| Polish   | EXCELLENT                  |
| Symmetry   | EXCELLENT                  |
| Fluorescence   | NONE                       |
| Inscription(s)   | <del>(G)</del> LG695505032 |
| Comments: As Grown - No indication of post-growth treatment.                                       |                            |
| This Laboratory Grown Diamond was created by High Pressure High Temperature (HPHT) growth process. |                            |
| Type II  |                            |



© IGI 2020, International Gemological Institute

FD - 10 20



THIS DOCUMENT WAS PRODUCED WITH THE FOLLOWING SECURITY MEASURES: SPECIAL DOCUMENT PAPER, INK SCREENS, WATERMARK, BACKGROUND DESIGNS, HOLOGRAM AND OTHER SECURITY FEATURES NOT LISTED AND DO EXCEED DOCUMENT SECURITY INDUSTRY GUIDELINES

**www.igi.org**

April 3, 2025  
 CGI Report No LG695505032  
 DISCUSSION MODIFIED BRILLIANT

[illegible]

**Comments:**  
As Grown - No indication of post-growth treatment.  
This Laboratory Grown Diamond was created by High Pressure High temperature (HPHT) growth process.