



ELECTRONIC COPY

LABORATORY GROWN DIAMOND REPORT

March 27, 2025	
IGI Report Number	LG693552224
Description	LABORATORY GROWN DIAMOND
Shape and Cutting Style	ROUND BRILLIANT
Measurements	8.31 - 8.34 X 5.06 MM

GRADING RESULTS

Carat Weight	2.15 CARATS
Color Grade	D
Clarity Grade	VVS 1
Cut Grade	IDEAL

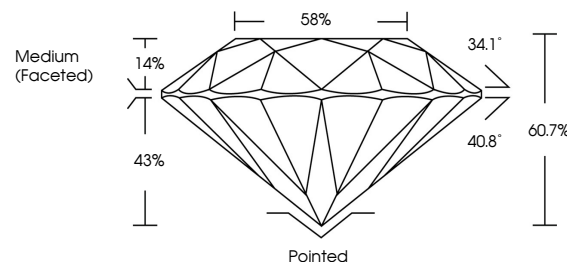
ADDITIONAL GRADING INFORMATION

Polish	EXCELLENT
Symmetry	EXCELLENT
Fluorescence	NONE
Inscription(s)	151 LG693552224

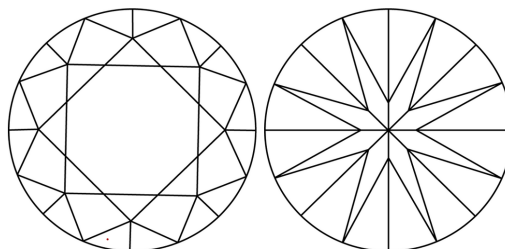
Comments: HEARTS & ARROWS
As Grown - No indication of post-growth treatment.
This Laboratory Grown Diamond was created by High
Pressure High Temperature (HPHT) growth process.
Type II

LG693552224
Report verification at lqi.org

PROPORTIONS

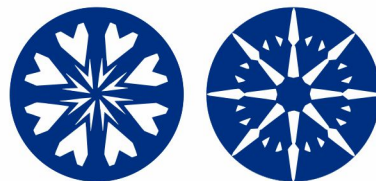


CLARITY CHARACTERISTICS

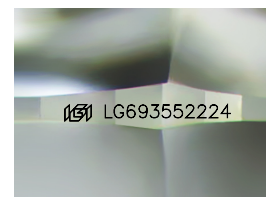


KEY TO SYMBOLS

Red symbols indicate internal characteristics.
Green symbols indicate external characteristics.



www.igi.org



Sample Image Used

COLOR

D E F G H I J Faint Very Light Light

CLARITY

IF WS¹⁻² VS¹⁻² SI¹⁻² |¹⁻³

Internally Flawless	Very Very Slightly Included	Very Slightly Included	Slightly Included	Included
------------------------	--------------------------------	---------------------------	----------------------	----------



© IGI 2020, International Gemological Institute

FD - 10 20

THIS DOCUMENT WAS PRODUCED WITH THE FOLLOWING SECURITY MEASURES: SPECIAL DOCUMENT PAPER, INK SCREENS, WATERMARK, BACKGROUND DESIGNS, HOLOGRAM AND OTHER SECURITY FEATURES NOT LISTED AND DO EXCEED DOCUMENT SECURITY INDUSTRY GUIDELINE

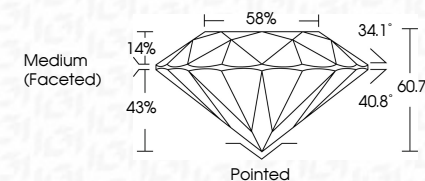
LABORATORY GROWN DIAMOND REPORT



March 27, 2025	
IGI Report Number	LG693552224
Description	LABORATORY GROWN DIAMOND
Shape and Cutting Style	ROUND BRILLIANT
Measurements	8.31 - 8.34 X 5.06 MM

GRADING RESULTS

Carat Weight	2.15 CARATS
Color Grade	D
Clarity Grade	VVS 1
Cut Grade	IDEAL



ADDITIONAL GRADING INFORMATION

Polish	EXCELLENT
Symmetry	EXCELLENT
Fluorescence	NONE
Inscription(s)	161 LG 693552224

Comments: HEARTS & ARROWS
As Grown - No indication of post-growth treatment.
This Laboratory Grown Diamond was created by High
Pressure High Temperature (HPHT) growth process.
Type II



March 27, 2025	Carat Weight	2.15 CARATS
GL Report No. LG59582224	Color Grade	D
ROUND BRILLIANT	Clarity Grade	VVS 1
1.31 - 0.34 X 5.05 MM	Cut Grade	IDEAL
	Depth	60.7%
	Table	58%
	Girdle	Medium (Faceted)
	Culet	Pointed
	Polish	EXCELLENT
	Symmetry	EXCELLENT
	Fluorescence	NONE
	Inscriptions(s)	lg59582224

Comments:
 -RARS & AROWS
 -None - No indication of post-growth
 -This Laboratory Growth Diamond was
 created by High Pressure High
 Temperature (HPHT) growth process.