

**ELECTRONIC COPY**

## LABORATORY GROWN DIAMOND REPORT

March 24, 2025	
IGI Report Number	LG693533182
Description	LABORATORY GROWN DIAMOND
Shape and Cutting Style	ROUND BRILLIANT
Measurements	8.46 - 8.50 X 5.23 MM
GRADING RESULTS	
Carat Weight	2.32 CARATS
Color Grade	D
Clarity Grade	INTERNALLY FLAWLESS
Cut Grade	IDEAL

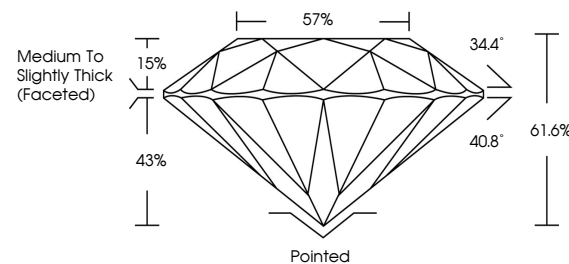
### ADDITIONAL GRADING INFORMATION

Polish	EXCELLENT
Symmetry	EXCELLENT
Fluorescence	NONE
Inscription(s)	 LG693533182

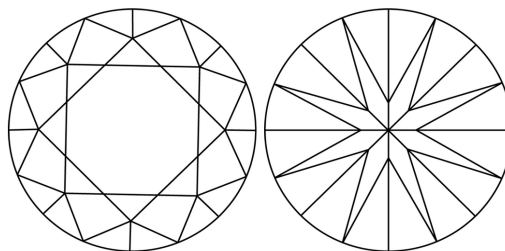
Comments: HEARTS & ARROWS  
As Grown - No indication of post-growth treatment.  
This Laboratory Grown Diamond was created by High  
Pressure High Temperature (HPHT) growth process.  
Type II

LG693533182  
Report verification at [igi.org](https://igi.org)

## PROPORTIONS

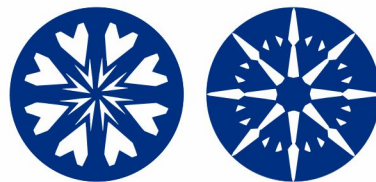


## CLARITY CHARACTERISTICS

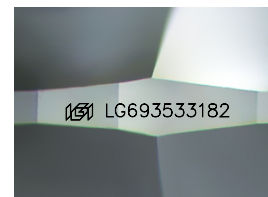


## KEY TO SYMBOLS

Red symbols indicate internal characteristics.  
Green symbols indicate external characteristics.



**www.igi.org**



Sample Image Used

**COLOR**

D E F G H I J Faint Very Light Light

## CLARITY

IF WS<sup>1-2</sup> VS<sup>1-2</sup> SI<sup>1-2</sup> |<sup>1-3</sup>

Internally Flawless	Very Very Slightly Included	Very Slightly Included	Slightly Included	Included
------------------------	--------------------------------	---------------------------	----------------------	----------



© IGI 2020, International Gemological Institute

FD - 10 20

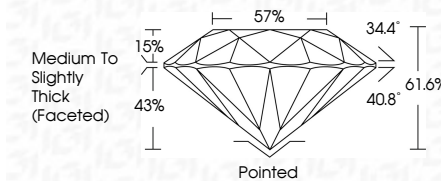


THIS DOCUMENT WAS PRODUCED WITH THE FOLLOWING SECURITY MEASURES: SPECIAL DOCUMENT PAPER, INK SCREENS, WATERMARK, BACKGROUND DESIGNS, HOLOGRAM AND OTHER SECURITY FEATURES NOT LISTED AND DO EXCEED DOCUMENT SECURITY INDUSTRY GUIDELINES

## LABORATORY GROWN DIAMOND REPORT



March 24, 2025	
IGI Report Number	LG693533182
Description	LABORATORY GROWN DIAMOND
Shape and Cutting Style	ROUND BRILLIANT
Measurements	8.46 - 8.50 X 5.23 MM
<b>GRADING RESULTS</b>	
Carat Weight	2.32 CARATS
Color Grade	D
Clarity Grade	INTERNALLY FLAWLESS
Cut Grade	IDEAL



### ADDITIONAL GRADING INFORMATION

Polish	EXCELLENT
Symmetry	EXCELLENT
Fluorescence	NONE
Inscription(s)	 LG693533182
Comments: HEARTS & ARROWS	
As Grown - No indication of post-growth treatment.	
This Laboratory Grown Diamond was created by High Pressure High Temperature (HPHT) growth process.	
Type II	



IG

March 24, 2025	IGI Report No. LG593533182		ROUND BRILLIANT	
48.46 - 6.50 X 5.23 MM	2.92 CARATS	D	IF	IDEAL
Color Grade				61.0%
Clarity Grade				57%
Cut Grade				Medium to slightly Thick Faceted
Depth				Ported
Table				EXCELLENT
Girdle				EXCELLENT
				NONE
				1691 LG593533182
Culet				Comments:
Polish				GRADED BY IGI
Symmetry				As Grwn - No indication of post-growth treatment.
Fluorescence				This Laboratory Grown Diamond was created by High Pressure High Temperature (HPHT) growth process.
Inscriptions(s)				