

ELECTRONIC COPY

LABORATORY GROWN DIAMOND REPORT

| | |
|-------------------------|----------------------------|
| September 11, 2024 | |
| IGI Report Number | LG651406347 |
| Description | LABORATORY GROWN DIAMOND |
| Shape and Cutting Style | CUSHION MODIFIED BRILLIANT |
| Measurements | 10.02 X 8.36 X 5.87 MM |

GRADING RESULTS

| | |
|---------------|-------------|
| Carat Weight | 3.87 CARATS |
| Color Grade | D |
| Clarity Grade | VVS 1 |

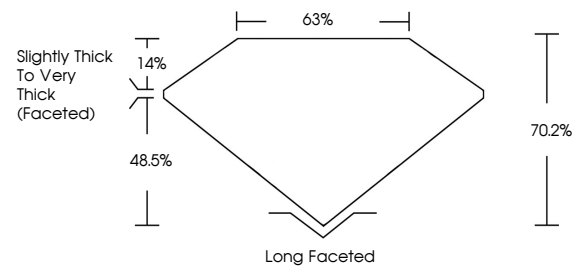
ADDITIONAL GRADING INFORMATION

| | |
|----------------|---|
| Polish | EXCELLENT |
| Symmetry | EXCELLENT |
| Fluorescence | NONE |
| Inscription(s) |  LG651406347 |

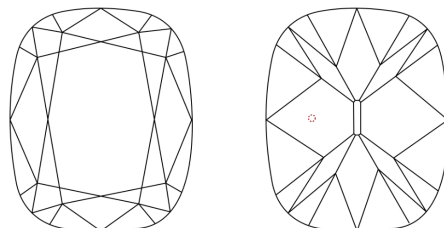
Comments: As Grown - No indication of post-growth treatment.
This Laboratory Grown Diamond was created by High Pressure High Temperature (HPHT) growth process.
Type II

LG651406347
Report verification at igi.org

PROPORTIONS

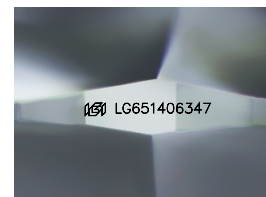


CLARITY CHARACTERISTICS



KEY TO SYMBOLS

Red symbols indicate internal characteristics.
Green symbols indicate external characteristics.



Sample Image Used

COLOR

D E F G H I J Faint Very Light Light

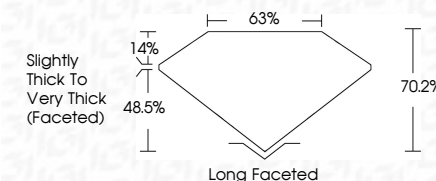
CLARITY

| IF | VVS ¹⁻² | VS ¹⁻² | SI ¹⁻² | I ¹⁻³ |
|---------------------|-----------------------------|------------------------|-------------------|------------------|
| Internally Flawless | Very Very Slightly Included | Very Slightly Included | Slightly Included | Included |

LABORATORY GROWN DIAMOND REPORT



| | |
|-------------------------|-------------------------------|
| September 11, 2024 | |
| IGI Report Number | LG651406347 |
| Description | LABORATORY GROWN DIAMOND |
| Shape and Cutting Style | CUSHION MODIFIED BRILLIANT |
| Measurements | 10.02 X 8.36 X 5.87 MM |
| GRADING RESULTS | |
| Carat Weight | 3.87 CARATS |
| Color Grade | D |
| Clarity Grade | VVS 1 |



ADDITIONAL GRADING INFORMATION

| | |
|--|----------------------------|
| Polish | EXCELLENT |
| Symmetry | EXCELLENT |
| Fluorescence | NONE |
| Inscription(s) | 151 LG651406347 |
| Comments: As Grown - No indication of post-growth treatment. | |
| This Laboratory Grown Diamond was created by High Pressure High Temperature (HPHT) growth process. | |
| Type II | |



IG



© IGI 2020, International Gemological Institute

FD - 10 20

September 11, 2024
 CGI Report No LG651406347
 DISCUSSION MODIFIED RRI11ANT

| | | |
|------------------------|--|-------------------|
| 10.02 X 5.35 X 5.87 MM | 3.87 CARATS | D |
| Carat Weight | VVS 1 | 70.21 |
| Color Grade | 70.21 | 65% |
| Depth | Slightly Thick To Very Thick (Faceted) | Long Faceted |
| Table | | EXCELLENT |
| Girdle | | EXCELLENT |
| Polish | | EXCELLENT |
| Symmetry | | EXCELLENT |
| Fluorescence | | NONE |
| Comments | | 4041 CAS# 4045927 |

Comments:
As Grown - No indication of post-growth treatment.