



**ELECTRONIC COPY**

## LABORATORY GROWN DIAMOND REPORT

June 7, 2024	
IGI Report Number	LG637472294
Description	LABORATORY GROWN DIAMOND
Shape and Cutting Style	ROUND BRILLIANT
Measurements	9.01 - 9.07 X 5.58 MM

## GRADING RESULTS

Carat Weight	2.80 CARATS
Color Grade	F
Clarity Grade	INTERNALLY FLAWLESS
Cut Grade	IDEAL

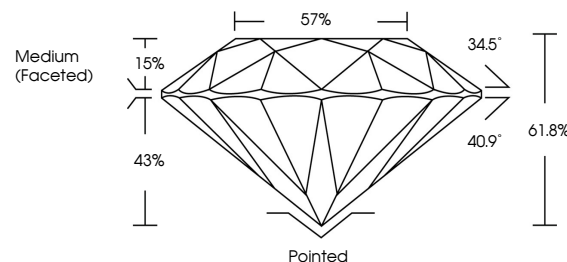
### ADDITIONAL GRADING INFORMATION

Polish	EXCELLENT
Symmetry	EXCELLENT
Fluorescence	NONE
Inscription(s)	 LG637472294

Comments: HEARTS & ARROWS  
As Grown - No indication of post-growth treatment.  
This Laboratory Grown Diamond was created by High  
Pressure High Temperature (HPHT) growth process.  
Type II

LG637472294  
Report verification at [lgi.org](https://lgi.org)

## PROPORTIONS



## CLARITY CHARACTERISTICS

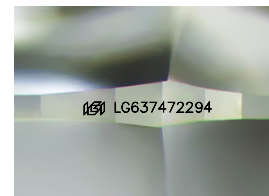


### KEY TO SYMBOLS

Red symbols indicate internal characteristics.  
Green symbols indicate external characteristics.



**www.igi.org**



Sample Image Used

## COLOR

D E F G H I J Faint Very Light Light

## CLARITY

IF	VVS <sup>1-2</sup>	VS <sup>1-2</sup>	SI <sup>1-2</sup>	I <sup>1-3</sup>
Internally Flawless	Very Very Slightly Included	Very Slightly Included	Slightly Included	Included



© IGI 2020, International Gemmological Institute

FD - 10 20

THIS DOCUMENT WAS PRODUCED WITH THE FOLLOWING SECURITY MEASURES: SPECIAL DOCUMENT PAPER, INK SCREENS, WATERMARK, BACKGROUND DESIGNS, HOLOGRAM AND OTHER SECURITY FEATURES NOT LISTED AND DO EXCEED DOCUMENT SECURITY INDUSTRY GUIDELINES

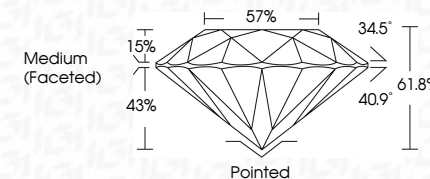
## LABORATORY GROWN DIAMOND REPORT



June 7, 2024	
IGI Report Number	LG637472294
Description	LABORATORY GROWN DIAMOND
Shape and Cutting Style	ROUND BRILLIANT
Measurements	9.01 - 9.07 X 5.58 MM

## GRADING RESULTS

Carat Weight	2.80 CARATS
Color Grade	F
Clarity Grade	INTERNALLY FLAWLESS
Cut Grade	IDEAL



### ADDITIONAL GRADING INFORMATION

Polish	EXCELLENT
Symmetry	EXCELLENT
Fluorescence	NONE
Inscription(s)	 LG637472294

Comments: HEARTS & ARROWS  
As Grown - No indication of post-growth treatment.  
This Laboratory Grown Diamond was created by High  
Pressure High Temperature (HPHT) growth process.  
Type II



IG

June 7, 2024  
GI Report No LG637472294  
ROUND BRILLIANT

9.01 - 9.07 X 5.59 MM	2.80 CARATS	
Carat Weight	IF	Pointed
Color Grade	IDEAL	EXCELLENT
Clarity Grade	61.0%	EXCELLENT
Cut Grade	57%	NONE
Depth		
Table		
Grade	Medium (Faceted)	
Culet		
Polish		
Symmetry		
Fluorescence		

**Comments:**  
**HEARTS & ARROWS**  
As Grown - No indication of post-growth treatment  
This Laboratory Grown Diamond was created by High Pressure High temperature (HPHT) growth process.