



ELECTRONIC COPY

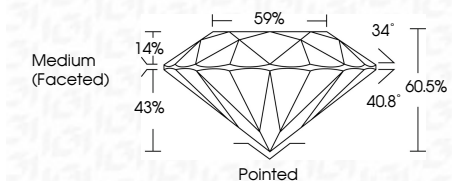
LG633413152
Report verification at igi.org



May 10, 2024
IGI Report Number **LG633413152**
Description **LABORATORY GROWN DIAMOND**
Shape and Cutting Style **ROUND BRILLIANT**
Measurements **9.81 - 9.84 X 5.94 MM**

GRADING RESULTS

Carat Weight **3.52 CARATS**
Color Grade **D**
Clarity Grade **VVS 1**
Cut Grade **IDEAL**



ADDITIONAL GRADING INFORMATION

Polish **EXCELLENT**
Symmetry **EXCELLENT**
Fluorescence **NONE**
Inscription(s) **IGI LG633413152**
Comments: HEARTS & ARROWS
As Grown - No indication of post-growth treatment.
This Laboratory Grown Diamond was created by High Pressure High Temperature (HPHT) growth process.
Type II



IGI

| | | | | |
|------------------|--|--|--|--|
| May 10, 2024 | IGI Report No LG633413152 | 3.52 CARATS | D | Pointed |
| ROUND BRILLIANT | 9.81 - 9.84 X 5.94 MM | VVS 1 | IDEAL | EXCELLENT |
| Carat Weight | Color Grade | Clarity Grade | Depth | Table |
| 3.52 CARATS | D | VVS 1 | 60.5% | 14% |
| Color Grade | Clarity Grade | Depth | Table | Grille |
| D | VVS 1 | 60.5% | 14% | Medium (Faceted) |
| Clarity Grade | Cut Grade | Table | Grille | Culet |
| VVS 1 | IDEAL | 14% | Medium (Faceted) | Pointed |
| Depth | Cut Grade | Grille | Culet | Polish |
| 60.5% | IDEAL | Culet | Polish | Symmetry |
| Table | Inscriptions(s) | Polish | Symmetry | Fluorescence |
| 14% | IGI LG633413152 | Symmetry | Fluorescence | Inscriptions(s) |
| Grille | Comments: HEARTS & ARROWS | Fluorescence | Inscriptions(s) | As Grown - No indication of post-growth treatment. |
| Medium (Faceted) | As Grown - No indication of post-growth treatment. | Inscriptions(s) | As Grown - No indication of post-growth treatment. | This Laboratory Grown Diamond was created by High Pressure High Temperature (HPHT) growth process. |
| Pointed | This Laboratory Grown Diamond was created by High Pressure High Temperature (HPHT) growth process. | As Grown - No indication of post-growth treatment. | This Laboratory Grown Diamond was created by High Pressure High Temperature (HPHT) growth process. | Type II |

May 10, 2024
IGI Report Number **LG633413152**
Description **LABORATORY GROWN DIAMOND**
Shape and Cutting Style **ROUND BRILLIANT**
Measurements **9.81 - 9.84 X 5.94 MM**

GRADING RESULTS

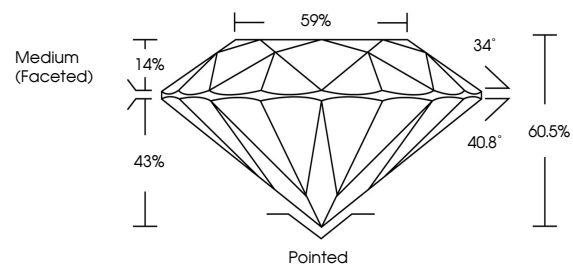
Carat Weight **3.52 CARATS**
Color Grade **D**
Clarity Grade **VVS 1**
Cut Grade **IDEAL**

ADDITIONAL GRADING INFORMATION

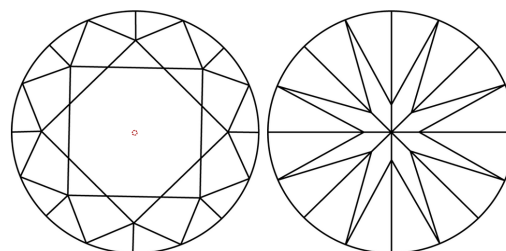
Polish **EXCELLENT**
Symmetry **EXCELLENT**
Fluorescence **NONE**
Inscription(s) **IGI LG633413152**

Comments: HEARTS & ARROWS
As Grown - No indication of post-growth treatment.
This Laboratory Grown Diamond was created by High Pressure High Temperature (HPHT) growth process.
Type II

PROPORTIONS

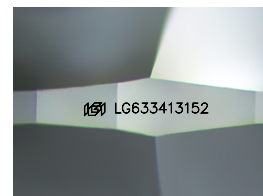
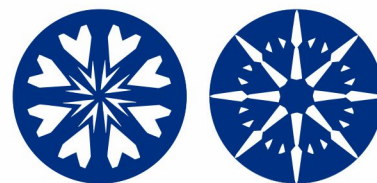


CLARITY CHARACTERISTICS



KEY TO SYMBOLS

Red symbols indicate internal characteristics.
Green symbols indicate external characteristics.



Sample Image Used

COLOR

D E F G H I J Faint Very Light Light

CLARITY

| | | | | |
|---------------------|-----------------------------|------------------------|-------------------|------------------|
| IF | VVS ¹⁻² | VS ¹⁻² | SI ¹⁻² | I ¹⁻³ |
| Internally Flawless | Very Very Slightly Included | Very Slightly Included | Slightly Included | Included |

