



ELECTRONIC COPY

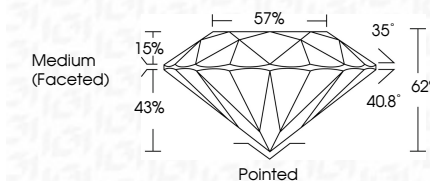
LG632428801 Report verification at igi.org



April 30, 2024 IGI Report Number LG632428801 Description LABORATORY GROWN DIAMOND Shape and Cutting Style ROUND BRILLIANT Measurements 10.21 - 10.27 X 6.33 MM

GRADING RESULTS

Carat Weight 4.10 CARATS Color Grade F Clarity Grade VVS 1 Cut Grade IDEAL

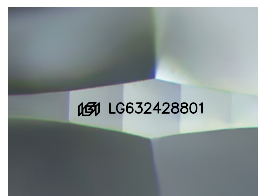


ADDITIONAL GRADING INFORMATION

Polish EXCELLENT Symmetry EXCELLENT Fluorescence NONE Inscription(s) LG632428801 Comments: HEARTS & ARROWS As Grown - No indication of post-growth treatment. This Laboratory Grown Diamond was created by High Pressure High Temperature (HPHT) growth process. Type II

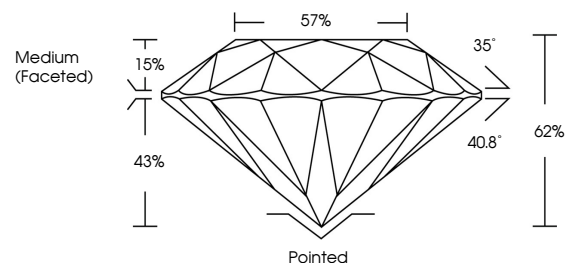


April 30, 2024 IGI Report No LG632428801 ROUND BRILLIANT 10.21 - 10.27 X 6.33 MM 4.10 CARATS F Color Grade VVS 1 IDEAL Clarity Grade VVS 1 IDEAL Depth 62% 57% Table 62% Girdle 57% Medium (Faceted) Culet Pointed Polish EXCELLENT Symmetry EXCELLENT Fluorescence NONE Inscriptions(i) IGI LG632428801 Comments: HEARTS & ARROWS As Grown - No indication of post-growth treatment. This Laboratory Grown Diamond was created by High Pressure High Temperature (HPHT) growth process. Type II

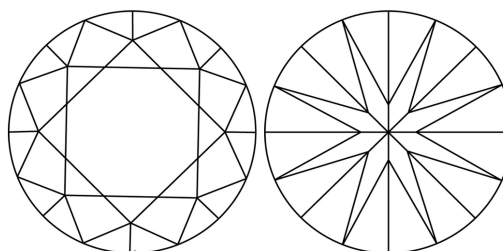


Sample Image Used

PROPORTIONS

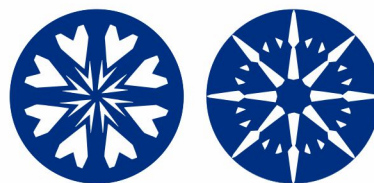


CLARITY CHARACTERISTICS



KEY TO SYMBOLS

Red symbols indicate internal characteristics. Green symbols indicate external characteristics.



COLOR

D E F G H I J Faint Very Light Light

CLARITY

IF VVS 1-2 VS 1-2 SI 1-2 I 1-3 Internally Flawless Very Very Slightly Included Very Slightly Included Slightly Included Included

