



ELECTRONIC COPY

LG628448136 Report verification at igi.org



March 13, 2026 IGI Report Number LG628448136 Description LABORATORY GROWN DIAMOND Shape and Cutting Style CUT CORNERED RECTANGULAR MODIFIED BRILLIANT Measurements 10.39 X 7.41 X 4.77 MM GRADING RESULTS Carat Weight 3.08 CARATS Color Grade D Clarity Grade INTERNALLY FLAWLESS

March 13, 2026 IGI Report Number LG628448136 Description LABORATORY GROWN DIAMOND Shape and Cutting Style CUT CORNERED RECTANGULAR MODIFIED BRILLIANT Measurements 10.39 X 7.41 X 4.77 MM

GRADING RESULTS

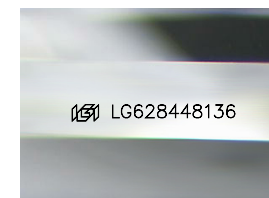
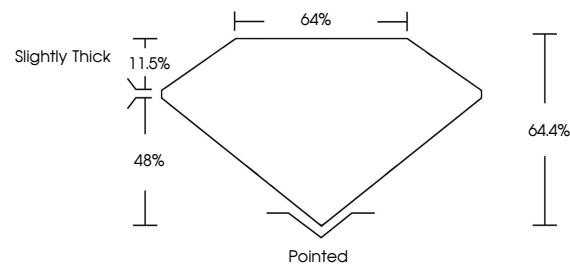
Carat Weight 3.08 CARATS Color Grade D Clarity Grade INTERNALLY FLAWLESS

ADDITIONAL GRADING INFORMATION

Polish EXCELLENT Symmetry EXCELLENT Fluorescence NONE Inscription(s) LG628448136

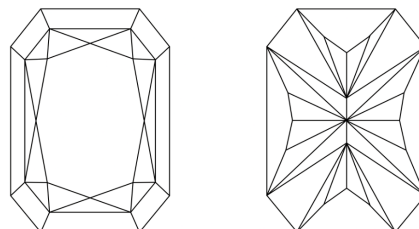
Comments: As Grown - No indication of post-growth treatment. This Laboratory Grown Diamond was created by High Pressure High Temperature (HPHT) growth process. Type II

PROPORTIONS



Sample Image Used

CLARITY CHARACTERISTICS



KEY TO SYMBOLS

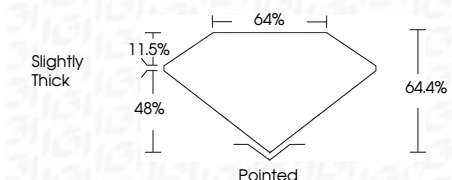
Red symbols indicate internal characteristics. Green symbols indicate external characteristics.

COLOR

D E F G H I J Faint Very Light Light

CLARITY

FL IF VS 1-2 VS 1-2 SI 1-2 I 1-3 Flawless Internally Flawless Very Very Slightly Included Very Slightly Included Slightly Included Included



ADDITIONAL GRADING INFORMATION

Polish EXCELLENT Symmetry EXCELLENT Fluorescence NONE Inscription(s) LG628448136 Comments: As Grown - No indication of post-growth treatment. This Laboratory Grown Diamond was created by High Pressure High Temperature (HPHT) growth process. Type II



IGI



March 13, 2026 IGI Report No LG628448136 CUT CORNERED RECT. MODIFIED BRILLIANT 10.39 X 7.41 X 4.77 MM 3.08 CARATS D LF 64% 64% Slightly Thick Pointed EXCELLENT EXCELLENT NONE NONE LG628448136

Comments: As Grown - No indication of post-growth treatment. This Laboratory Grown Diamond was created by High Pressure High Temperature (HPHT) growth process. Type II