



ELECTRONIC COPY

LG628447433
Report verification at igi.org



May 6, 2024

IGI Report Number **LG628447433**

Description **LABORATORY GROWN DIAMOND**

Shape and Cutting Style **CUT CORNERED
RECTANGULAR MODIFIED
BRILLIANT**

Measurements **12.38 X 8.91 X 6.33 MM**

GRADING RESULTS

Carat Weight **6.13 CARATS**

Color Grade **E**

Clarity Grade **INTERNALLY FLAWLESS**

May 6, 2024

IGI Report Number **LG628447433**

Description **LABORATORY GROWN DIAMOND**

Shape and Cutting Style **CUT CORNERED RECTANGULAR
MODIFIED BRILLIANT**

Measurements **12.38 X 8.91 X 6.33 MM**

GRADING RESULTS

Carat Weight **6.13 CARATS**

Color Grade **E**

Clarity Grade **INTERNALLY FLAWLESS**

ADDITIONAL GRADING INFORMATION

Polish **EXCELLENT**

Symmetry **EXCELLENT**

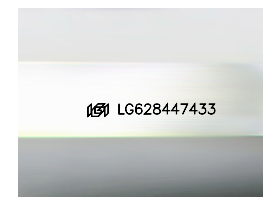
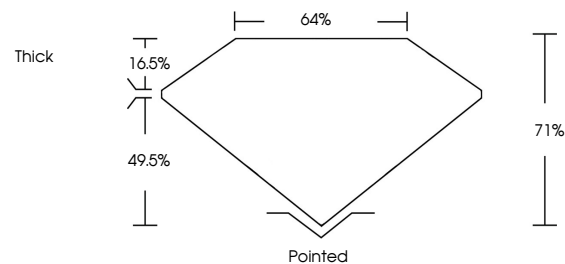
Fluorescence **NONE**

Inscription(s) **IGI LG628447433**

Comments: As Grown - No indication of post-growth treatment.

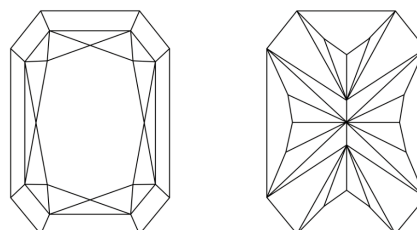
This Laboratory Grown Diamond was created by High Pressure High Temperature (HPHT) growth process. Type II

PROPORTIONS



Sample Image Used

CLARITY CHARACTERISTICS



KEY TO SYMBOLS

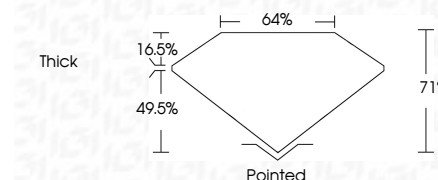
Red symbols indicate internal characteristics.
Green symbols indicate external characteristics.

COLOR

D E F G H I J Faint Very Light Light

CLARITY

IF	VS ¹⁻²	VS ¹⁻²	SI ¹⁻²	I ¹⁻³
Internally Flawless	Very Very Slightly Included	Very Slightly Included	Slightly Included	Included



ADDITIONAL GRADING INFORMATION

Polish **EXCELLENT**

Symmetry **EXCELLENT**

Fluorescence **NONE**

Inscription(s) **IGI LG628447433**

Comments: As Grown - No indication of post-growth treatment.

This Laboratory Grown Diamond was created by High Pressure High Temperature (HPHT) growth process. Type II



IGI

May 6, 2024
IGI Report No. LG628447433
CUT CORNERED RECT. MODIFIED BRILLIANT
12.38 X 8.91 X 6.33 MM
6.13 CARATS
E
Color Grade
Clarity Grade
Depth
Table
Girdle
Thick
Pointed
EXCELLENT
EXCELLENT
NONE
IGI LG628447433

Comments: As Grown - No indication of post-growth treatment.
This Laboratory Grown Diamond was created by High Pressure High Temperature (HPHT) growth process. Type II

