



**ELECTRONIC COPY**

**LABORATORY GROWN DIAMOND REPORT**

May 3, 2024  
 IGI Report Number **LG628447406**  
 Description **LABORATORY GROWN DIAMOND**  
 Shape and Cutting Style **ROUND BRILLIANT**  
 Measurements **11.09 - 11.14 X 6.76 MM**

**GRADING RESULTS**

Carat Weight **5.10 CARATS**  
 Color Grade **F**  
 Clarity Grade **INTERNALLY FLAWLESS**  
 Cut Grade **IDEAL**

**ADDITIONAL GRADING INFORMATION**

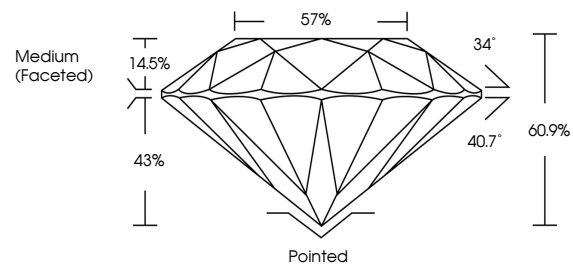
Polish **EXCELLENT**  
 Symmetry **EXCELLENT**  
 Fluorescence **NONE**  
 Inscription(s) **LG628447406**

Comments: HEARTS & ARROWS  
 As Grown - No indication of post-growth treatment.  
 This Laboratory Grown Diamond was created by High Pressure High Temperature (HPHT) growth process.  
 Type II

**LABORATORY GROWN DIAMOND REPORT**

**LG628447406**  
 Report verification at [igi.org](http://igi.org)

**PROPORTIONS**



**CLARITY CHARACTERISTICS**



**KEY TO SYMBOLS**

Red symbols indicate internal characteristics.  
 Green symbols indicate external characteristics.



**LABORATORY GROWN  
DIAMOND REPORT**

**GRADING SCALES**

**CLARITY**

IF	VVS <sup>1-2</sup>	VS <sup>1-2</sup>	SI <sup>1-2</sup>	I <sup>1-3</sup>
Internally Flawless	Very Very Slightly Included	Very Slightly Included	Slightly Included	Included

**COLOR**

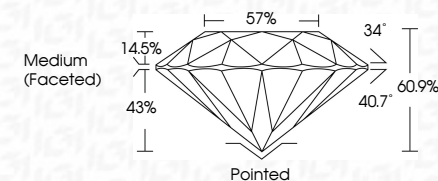
D	E	F	G	H	I	J	Faint	Very Light	Light
---	---	---	---	---	---	---	-------	------------	-------

**LABORATORY GROWN DIAMOND REPORT**

May 3, 2024  
 IGI Report Number **LG628447406**  
 Description **LABORATORY GROWN DIAMOND**  
 Shape and Cutting Style **ROUND BRILLIANT**  
 Measurements **11.09 - 11.14 X 6.76 MM**

**GRADING RESULTS**

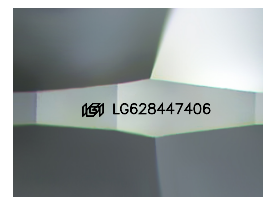
Carat Weight **5.10 CARATS**  
 Color Grade **F**  
 Clarity Grade **INTERNALLY FLAWLESS**  
 Cut Grade **IDEAL**



**ADDITIONAL GRADING INFORMATION**

Polish **EXCELLENT**  
 Symmetry **EXCELLENT**  
 Fluorescence **NONE**  
 Inscription(s) **LG628447406**

Comments: HEARTS & ARROWS  
 As Grown - No indication of post-growth treatment.  
 This Laboratory Grown Diamond was created by High Pressure High Temperature (HPHT) growth process.  
 Type II



Sample Image Used



**IGI**

May 3, 2024	IGI Report No <b>LG628447406</b>	<b>6.10 CARATS</b>	<b>F</b>
<b>ROUND BRILLIANT</b>	<b>11.09 - 11.14 X 6.76 MM</b>	<b>IDEAL</b>	<b>60.9%</b>
Carat Weight	Color Grade	Clarity Grade	Depth
5.10	F	IF	60.9%
6.10	IDEAL	60.9%	57%
Color Grade	Clarity Grade	Cut Grade	Medium (Faceted)
F	IF	IDEAL	Medium (Faceted)
Clarity Grade	Depth	Table	Culet
60.9%	57%	57%	Pointed
57%	Medium (Faceted)	Grille	EXCELLENT
Medium (Faceted)	Culet	Polish	EXCELLENT
EXCELLENT	Polish	Symmetry	EXCELLENT
EXCELLENT	Symmetry	Fluorescence	NONE
NONE	Fluorescence	Inscriptions(s)	IGI LG628447406
IGI LG628447406	Inscriptions(s)	Comments:	HEARTS & ARROWS
None	Comments:	As Grown - No indication of post-growth treatment.	This Laboratory Grown Diamond was created by High Pressure High Temperature (HPHT) growth process.
None	As Grown - No indication of post-growth treatment.	This Laboratory Grown Diamond was created by High Pressure High Temperature (HPHT) growth process.	Type II